

DriX Airchanger

(Model: F170)

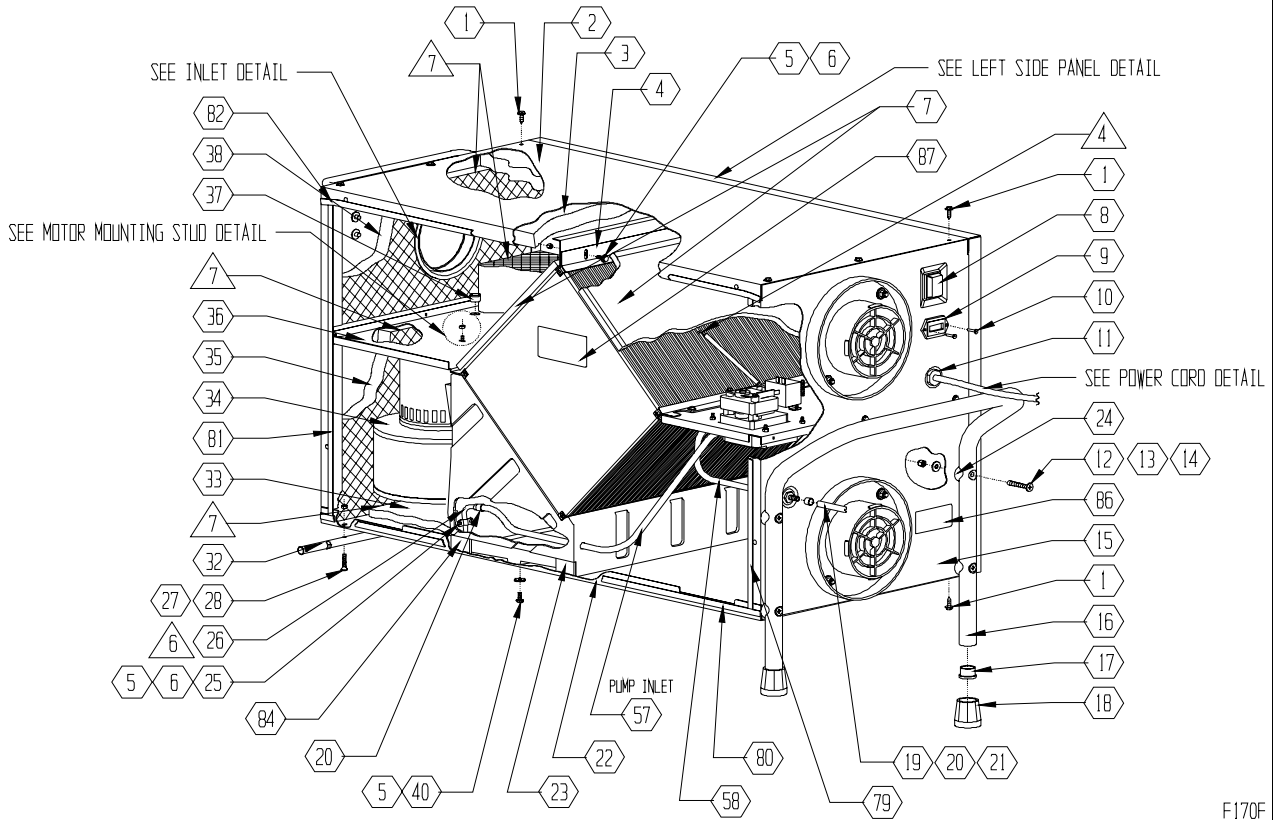
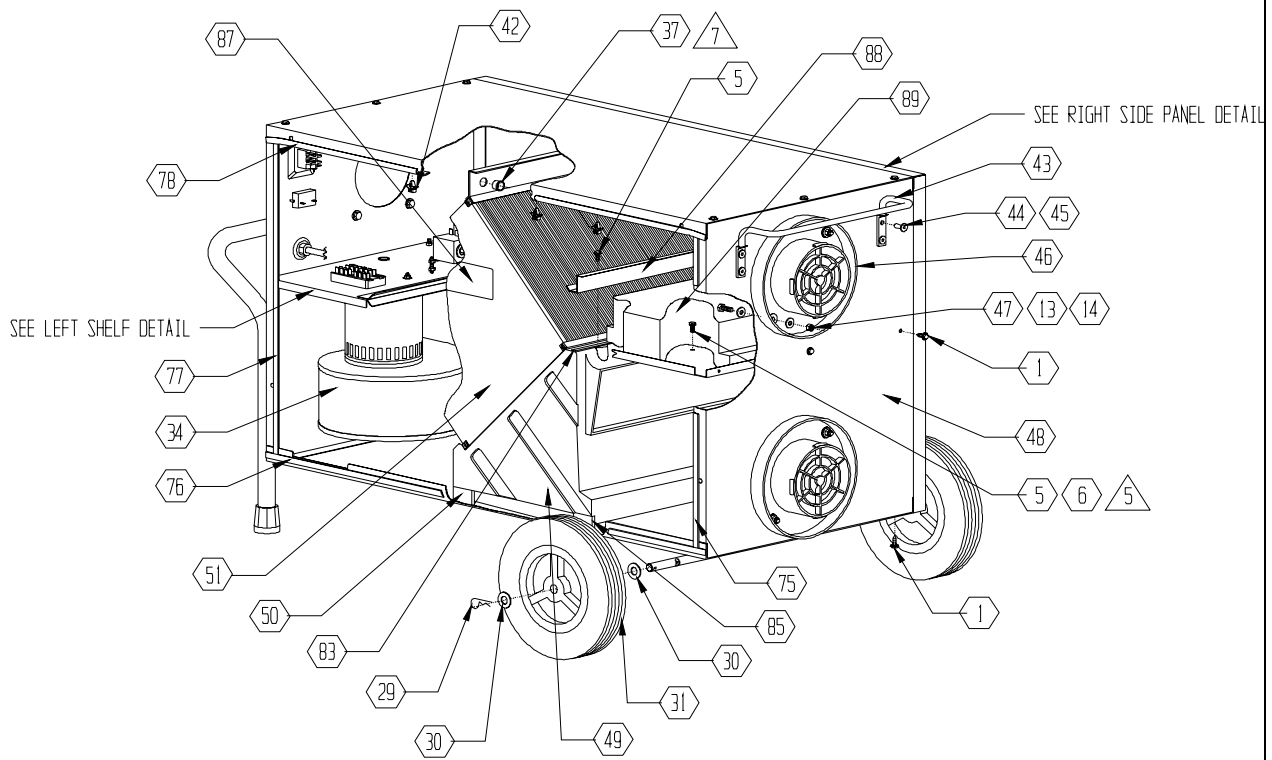
Symbol Definition

- * - multiple components to choose from for different models: voltage, size, color, etc.
- + - if you order this item, you may need to order additional items marked with same number of +'s in order to upgrade or complete repair

Find#	Part Description	Specifications/Model	Part #	Qty
	Connector	Qc .250 Male Fully Insul 22/18 Ga	02-00033	ea. 2
	Wire	Black 14Ga AWM 105c/600v	02-00102	ft. .75'
	Wire	White 18Ga Awm 105c/600v	02-00104	ft. 5.67'
	Wire	Black 18Ga Awm 105c/600v	02-00105	ft. 5.83'
	Connector	Qc .250 Fem Fully Insul 16/14 Ga	02-00135	ea. 2
8	Switch, Rocker *	Red, On/Off (After 6/27/01)	02-00255	ea. 1
	Connector	Qc .250 Fem Fully Insul 22/18 Ga	02-01117	ea. 12
45	Washer	1/4" Rivet .26 ID x .50 OD x .06 Zp	03-00001	ea. 4
40	Washer	#10 x 5/8 OD Stl/Neoprene	03-00006	ea. 2
24	Spacer	Nylon	03-00009	ea. 4
	Cable Tie	Nylon 4"	03-00012	ea. 10
	Cable Tie	Nylon 4"	03-00012	ea. 1
14	Nut	Nyloc, 1/4-20 Zp	03-00017	ea. 20
13	Washer	1/4 ID x 5/8 OD Flat Zp	03-00018	ea. 36
44	Rivet	1/4" Steel Zp SSP 8-8	03-00022	ea. 4
53	Screw	#8 x 1/2" Pan Head Phil Sms Zp	03-00023	ea. 2
10	Rivet	1/8" Aluminum AAP4-8	03-00036	ea. 2
6	Nut	w/ Star Washer 10-24 Zp	03-00038	ea. 13
75	Gasket	3/8 x .06 Closed Cell Neoprene (20.2")	03-00049	ft. 1.68'
76	Gasket	3/8 x .06 Closed Cell Neoprene (36")	03-00049	ft. 3'
77	Gasket	3/8 x .06 Closed Cell Neoprene (20.2")	03-00049	ft. 1.68'
78	Gasket	3/8 x .06 Closed Cell Neoprene (36")	03-00049	ft. 3'
79	Gasket	3/8 x .06 Closed Cell Neoprene (20.2")	03-00049	ft. 1.68'
80	Gasket	3/8 x .06 Closed Cell Neoprene (36")	03-00049	ft. 3'
81	Gasket	3/8 x .06 Closed Cell Neoprene (20.2")	03-00049	ft. 1.68'
82	Gasket	3/8 x .06 Closed Cell Neoprene (36")	03-00049	ft. 3'
83	Gasket	3/8 x .06 Closed Cell Neoprene (17")	03-00049	ft. 1.42'
37	Bushing	.39 ID x .56 OD Split Black	03-00050	ea. 3
1	Screw	#10 x 3/8" AB SHWH Zp Black	03-00079	ea. 18
	Nut	#10-24 Hex Insert Al	03-00089	ea. 4
63	Screw	1/4-20 x 1.75 Ser Hwh Zp	03-00118	ea. 8
47	Bolt	1/4-20 x 3/4" Hex Head Zp	03-00139	ea. 16
20	Clamp	Hose Green 3/8"ID (1/4" 5073-133)	03-00471	ea. 7
27	Bolt	Oval HD Phil 10-24 x 1/8"	03-00490	ea. 3
28	Nut	Nyloc 10-24 Zinc	03-00491	ea. 3
29	Pin	Hitch #17	03-00501	ea. 2
30	Washer	1 1/4" x 1/2" x .062 SS	03-00502	ea. 4
12	Bolt	Oval HD Phil Mach 1/4-20 x 1	03-00503	ea. 4
42	Push Mount	Cable Tie, Nylon	03-00771	ea. 3
59	Screw	HWH Class 2 TF 8-32 x 1/4"	03-00962A	ea. 2
	Clamp	Ducting 5" SS	03-01036	ea. 2
5	Screw	10-24 x 1/2" Slot Hwh Zp	03-01429	ea. 15

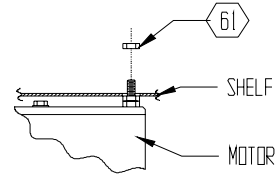
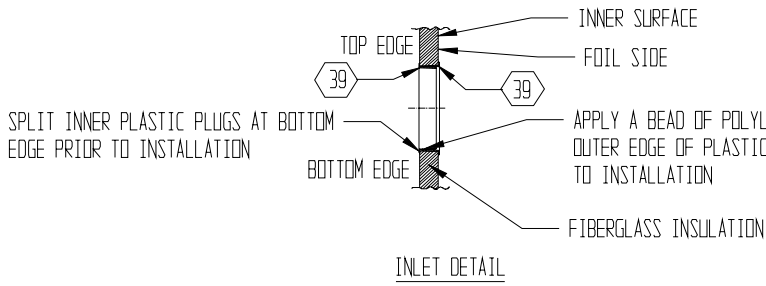
Find#	Part Description	Specifications/Model	Part #		Qty
	Bag	Poly 9 x 15 2 Mil	06-00056	ea.	3
	Card	Warranty Registration	07-00309	ea.	1
87	Label	Caution Y/B Dehumidifier	07-01432	ea.	2
46	Duct Ring	5" ABS Black	11-00105	ea.	6
9	Meter	Hour 115/230v	12-00929	ea.	1
	Ducting	5" Insulated	13-00019	ea.	2
	Insulation	.875 ID x .5 Wall x 6Ft	13-00115	ea.	2
18	Rubber Tip	Black Rigid Handle, 1"	13-00510	ea.	2
31	Wheel	9" X 1/2" Bore Black	13-00861	ea.	2
17	Plug	Tube End, Metal 1" Zp	13-01190	ea.	2
19	Tubing	1/4" ID x 3/8" OD Vinyl (40')	15-00195	ft.	40'
58	Tubing	1/4" ID X 3/8" OD Vinyl (12")	15-00195	ft.	1'
57	Tubing	1/4" ID X 3/8" OD Vinyl (24")	15-00195	ft.	2'
	Pump Tubing	Peristaltic	15-00495	ft.	12"
	Tubing	5/16" Dia Soft Copper Tube AC/R (4")	18-00765	ft.	.3'
21	Fitting	Plastic 1/4" Bulk Head BHU 22-04	18-00812	ea.	1
25	Clamp	Tubing 1/4" Copper	18-01132	ea.	1

DriX AirChanger Pictorial Drawing



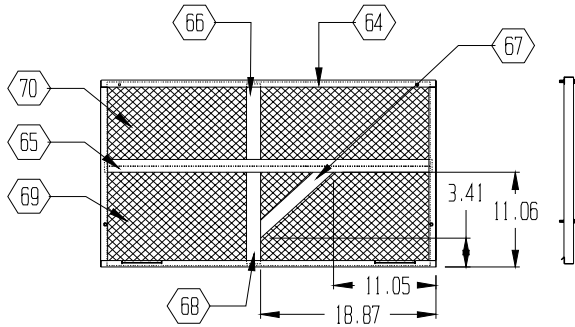
F170F

DriX AirChanger Pictorial Drawing

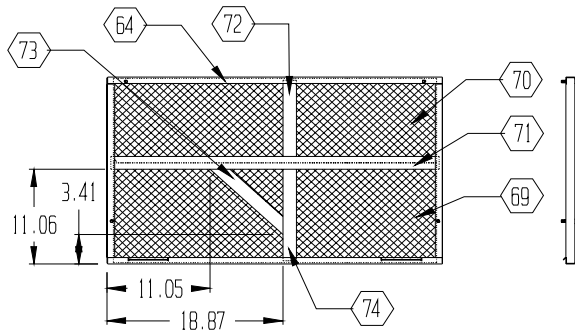


(TYP 2 PLCS)

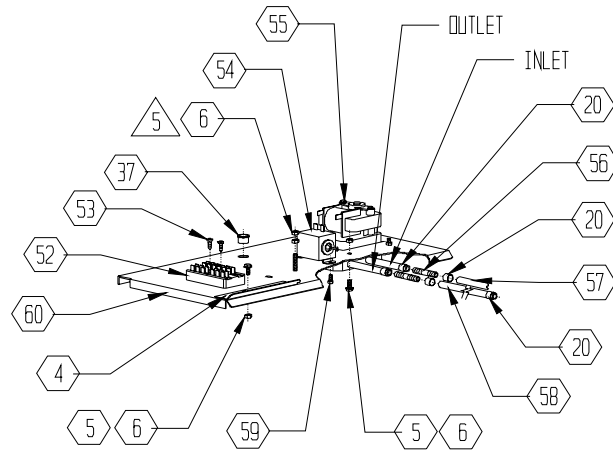
MOTOR MOUNTING STUD DETAIL



RIGHT SIDE PANEL DETAIL



LEFT SIDE PANEL DETAIL



LEFT SHELF DETAIL

F170F